

VALO™

BY M-ELEC



ALL YOUR 24V LED STRIP NEEDS

✓ LED strip ✓ ALU housing ✓ Controllers ✓ Power supplies





VALO Range
Scan now

24V LED Strip Lighting | Indoor Single Colour



Standard LED Strip

ML-VL-4.8-W5 White 5m
ML-VL-4.8-NW5 Neutral White 5m
ML-VL-4.8-WW5 Warm White 5m

ML-VL-4.8-W50 White 50m
ML-VL-4.8-NW50 Neutral White 50m
ML-VL-4.8-WW50 Warm White 50m

Total Power Consumed (p/m)	4.8W*
Max Lumen Output (p/m)	(WW) 360lm (NW) 370lm (W) 380lm
Efficacy	Up to 79lm/W
Input Voltage	24V DC
Colour Temperature	3000K (WW) 4000K (NW) 6000K (W)
LED Chip & Qty	SMD3528 60/m
Beam Angle	120°
Dimmable	Yes (with correct power supply and controller)
Approx Min Cut	100mm
Maximum Run Length	10m
IP Rating	IP20
Dimensions	L 5m x W 8mm x H 2.2mm / L 50m x W 8mm x H 2.2mm
Operating Temperature	-40°C to +70°C
Average Life	40,000 hrs**
Warranty	7 Years
Kit Includes	1 x 5m/50m LED strip, 5/25 x connectors

Long Run LED Strip

ML-VLMX-7.2-W50 White 50m
ML-VLMX-7.2-NW50 Neutral White 50m
ML-VLMX-7.2-WW50 Warm White 50m

Total Power Consumed (p/m)	7.2W*
Max Lumen Output (p/m)	(WW) 700lm (NW) 750lm (W) 750lm
Efficacy	Up to 104lm/W
Input Voltage	24V DC
Colour Temperature	3000K (WW) 4000K (NW) 6000K (W)
LED Chip & Qty	SMD2835 60/m
Dimmable	Yes (with correct power supply and controller)
Approx Min Cut	97mm
Maximum Run Length	20m
IP Rating	IP20
Dimensions	L 50m x W 12mm x H 1.6mm
Operating Temperature	-40°C to +70°C
Average Life	40,000 hrs**
Warranty	7 years
Kit Includes	1 x 50m LED strip, 25 x connectors



High Output LED Strip

ML-VL-9.6-W5 White 5m
ML-VL-9.6-NW5 Neutral White 5m
ML-VL-9.6-WW5 Warm White 5m

ML-VL-9.6-W50 White 50m
ML-VL-9.6-NW50 Neutral White 50m
ML-VL-9.6-WW50 Warm White 50m

Total Power Consumed (p/m)	9.6W*
Max Lumen Output (p/m)	(WW) 720lm (NW) 740lm (W) 760lm
Efficacy	Up to 79lm/W
Input Voltage	24V DC
Colour Temperature	3000K (WW) 4000K (NW) 6000K (W)
LED Chip & Qty	SMD3528 120/m
Beam Angle	120°
Dimmable	Yes (with correct power supply and controller)
Approx Min Cut	50mm
Maximum Run Length	10m
IP Rating	IP20
Dimensions	L 5m x W 8mm x H 2.2mm / L 50m x W 8mm x H 2.2mm
Operating Temperature	-40°C to +70°C
Average Life	40,000 hrs**
Warranty	7 years
Kit Includes	1 x 5m/50m LED strip, 5/25 x connectors



24V LED Strip Lighting | Indoor Single Colour

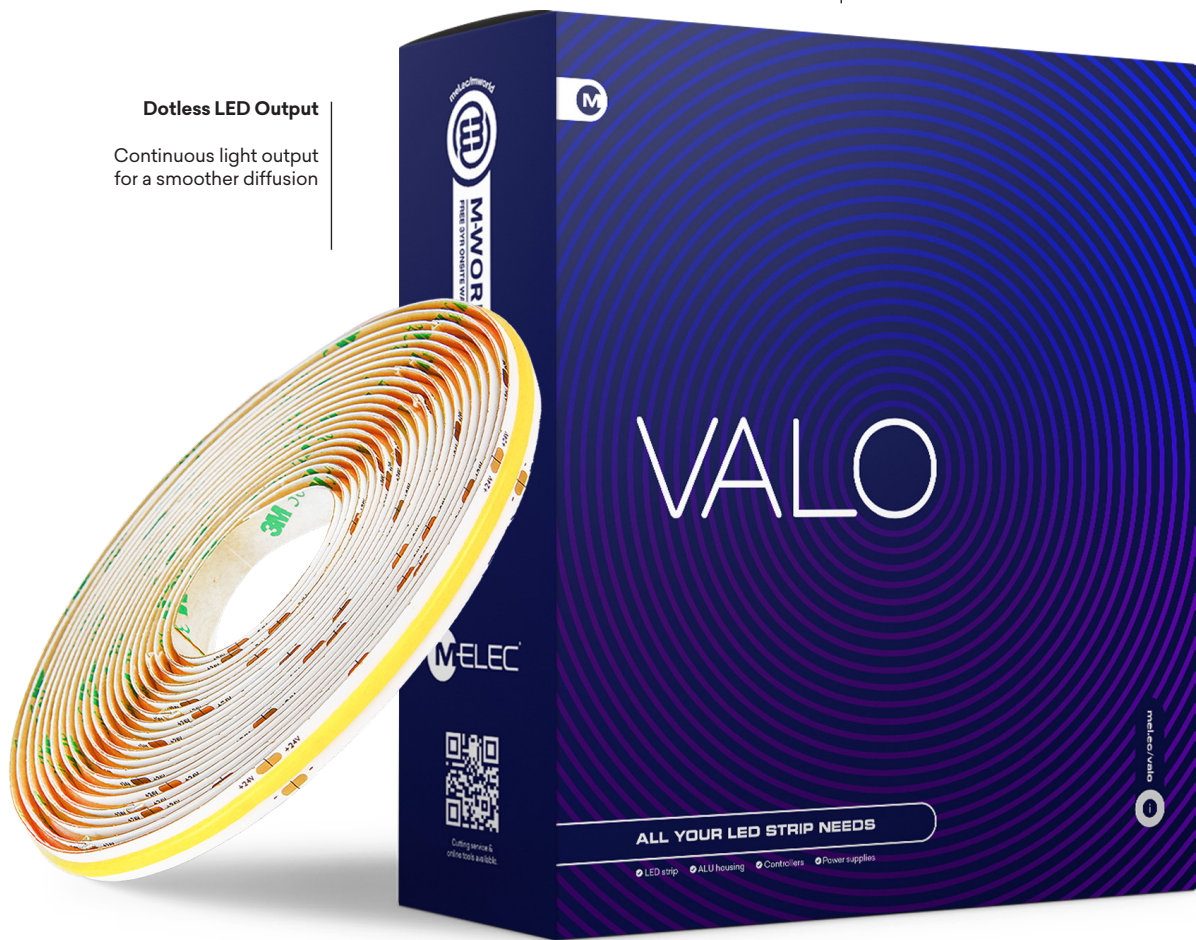


Colour

Available in WW, NW & W

Dotless LED Output

Continuous light output for a smoother diffusion



Laser LED Strip

ML-VLLZ-10-W50 White 50m
ML-VLLZ-10-NW50 Neutral White 50m
ML-VLLZ-10-WW50 Warm White 50m

Total Power Consumed (p/m)	10W*
Max Lumen Output (p/m)	(WW) 910lm (NW) 989lm (W) 1080lm
Efficacy	Up to 108lm/W
Input Voltage	24V DC
Colour Temperature	3000K (WW) 4000K (NW) 6500K (W)
LED Chip & Qty	COB 512/m
Beam Angle	120°
Dimmable	Yes (with correct power supply and controller)
Approx Min Cut	62.5mm
Maximum Run Length	5m
IP Rating	IP20
Dimensions	L 50m x W 10mm x H 1.5mm
Operating Temperature	-40°C to +70°C
Average Life	40,000 hrs**
Warranty	7 years
Kit Includes	1 x 50m LED strip, 25 x connectors

Length

Comes in 50m roll

24V LED Strip Lighting | Indoor Single Colour



Ultra Bright LED Strip

ML-VL-11.5-W5 White 5m
ML-VL-11.5-NW5 Neutral White 5m
ML-VL-11.5-WW5 Warm White 5m

ML-VL-11.5-W50 White 50m
ML-VL-11.5-NW50 Neutral White 50m
ML-VL-11.5-WW50 Warm White 50m

Total Power Consumed (p/m)	11.5W*
Max Lumen Output (p/m)	(WW) 1470lm (NW) 1590lm (W) 1610lm
Efficacy	Up to 140lm/W
Input Voltage	24V DC
Colour Temperature	3000K (WW) 4000K (NW) 6500K (W)
LED Chip & Qty	SMD3014 128/m
Beam Angle	120°
Dimmable	Yes (with correct power supply and controller)
Approx Min Cut	62.5mm
Maximum Run Length	10m
IP Rating	IP20
Dimensions	L 5m x W 10mm x H 1.5mm / L 50m x W 10mm x H 1.5mm
Operating Temperature	-40°C to +70°C
Average Life	40,000 hrs**
Warranty	7 years
Kit Includes	1 x 5m/50m LED strip, 5/25 x connectors

High Output Full Spectrum LED Strip

ML-VLCRI-14.4-W5 White 5m
ML-VLCRI-14.4-NW5 Neutral White 5m
ML-VLCRI-14.4-WW5 Warm White 5m

ML-VLCRI-14.4-W50 White 50m
ML-VLCRI-14.4-NW50 Neutral White 50m
ML-VLCRI-14.4-WW50 Warm White 50m

Total Power Consumed (p/m)	14.4W*
Max Lumen Output (p/m)	(WW) 880lm (NW) 980lm (W) 1010lm
Efficacy	Up to 70lm/W
Input Voltage	24V DC
Colour Temperature	3000K (WW) 4000K (NW) 6000K (W)
LED Chip & Qty	SMD2835 60/m
Beam Angle	120°
Dimmable	Yes (with correct power supply and controller)
Approx Min Cut	100mm
Maximum Run Length	10m
IP Rating	IP20
CRI	97
Dimensions	L 5m x W 10mm x H 1.1mm / L 50m x W 10mm x H 1.1mm
Operating Temperature	-40°C to +70°C
Average Life	40,000 hrs**
Warranty	7 years
Kit Includes	1 x 5m/50m LED strip, 5/25 x connectors



Max Output LED Strip

ML-VL-17.2-W50 White 50m
ML-VL-17.2-NW50 Neutral White 50m
ML-VL-17.2-WW50 Warm White 50m

Total Power Consumed (p/m)	17.2W*
Max Lumen Output (p/m)	(WW) 2200lm (NW) 2370lm (W) 2410lm
Efficacy	Up to 140lm/W
Input Voltage	24V DC
Colour Temperature	3000K (WW) 4000K (NW) 6500K (W)
LED Chip & Qty	SMD3014 192/m
Beam Angle	120°
Dimmable	Yes (with correct power supply and controller)
Approx Min Cut	41.6mm
Maximum Run Length	5m
IP Rating	IP20
Dimensions	L 50m x W 10mm x H 1.5mm
Operating Temperature	-40°C to +70°C
Average Life	40,000 hrs**
Warranty	7 years
Kit Includes	1 x 50m LED strip, 25 x connectors



24V LED Strip Lighting | Indoor RGB



Standard RGB LED Strip

ML-VL-7.2-RGB50 Colour Changing 50m

Total Power Consumed (p/m)	7.2W*
Input Voltage	24V DC
Colour Temperature	RGB
LED Chip & Qty	SMD5050 30/m
Beam Angle	120°
Dimmable	Yes (with correct power supply and controller)
Approx Min Cut	166.7mm
Maximum Run Length	10m
IP Rating	IP20
Dimensions	L 50m x W 10mm x H 2mm
Operating Temperature	-40°C to +70°C
Average Life	40,000 hrs**
Warranty	7 years
Kit Includes	1 x 50m LED strip, 25 x connectors

Standard RGB, W/NW/WW LED Strip

ML-VL-12-RGBW50 Colour Changing 50m ML-VL-12-RGBNW50 Colour Changing 50m ML-VL-12-RGBWW50 Colour Changing 50m

Total Power Consumed (p/m)	12W*
Max Lumen Output (p/m)	(WW) 650lm (NW) 700lm (W) 700lm
Efficacy	Up to 58lm/W
Input Voltage	24V DC
Colour Temperature	(WW) RGB + 3000K (NW) RGB + 4000K (W) RGB + 6000K
LED Chip & Qty	SMD2835 320/m
Beam Angle	120°
Dimmable	Yes (with correct power supply and controller)
Approx Min Cut	100mm
Maximum Run Length	10m
IP Rating	IP20
Dimensions	L 50m x W 10mm x H 2mm
Operating Temperature	-40°C to +70°C
Average Life	40,000 hrs**
Warranty	7 years
Kit Includes	1 x 50m LED Strip, 25 x connectors



High Output RGB LED Strip

ML-VL-14.4-RGB50 Colour Changing 50m

Total Power Consumed (p/m)	14.4W*
Input Voltage	24V DC
Colour Temperature	RGB
LED Chip & Qty	SMD5050 60/m
Beam Angle	120°
Dimmable	Yes (with correct power supply and controller)
Min Cut	100mm
Maximum Run Length	10m
IP Rating	IP20
Dimensions	L 50m x W 10mm x H 2mm
Operating Temperature	-40°C to +70°C
Average Life	40,000 hrs**
Warranty	7 years
Kit Includes	1 x 50m LED strip, 25 x connectors



24V LED Strip Lighting | Indoor RGB



RGB Laser LED Strip

ML-VLLZ-15-RGB50 Colour Changing 50m

Total Power Consumed (p/m)	15W*
Input Voltage	24V DC
Colour Temperature	RGB
LED Chip & Qty	Sanan 840/m
Beam Angle	180°
Dimmable	Yes (with correct power supply and controller)
Approx Min Cut	50mm
Maximum Run length	5m
IP Rating	IP20
Dimensions	L 50m x W 10mm x H 2.3mm
Operating Temperature	-40°C to +70°C
Average Life	40,000 hrs**
Warranty	7 years
Kit Includes	1 x 50m LED strip, 25 x connectors

RGBWW Laser LED Strip

ML-VLLZ-16-RGBWW20 RGB Warm White 20m

Total Power Consumed (p/m)	16W*
Input Voltage	24V DC
Colour Temperature	RGBWW
LED Chip & Qty	Sanan COB 896/m
Beam Angle	180°
Dimmable	Yes (with correct power supply and controller)
Approx Min Cut	34.25mm
Maximum Run Length	5m
IP Rating	IP20
Dimensions	L 20m x W 12mm x H 2.3mm
Operating Temperature	-40°C to +70°C
Average Life	40,000 hrs**
Warranty	7 years
Kit Includes	1x 20m LED strip, 10x connectors



Cutting Service
Scan now



Online Tools
Scan now

*Total power consumed including driver **Average life is calculated on expected average lifespan

24V LED Strip Lighting | Outdoor Single Colour



Colour
Available in White (W)



Neon LED Strip

ML-VLN-9.6-W20 White 20M

Total Power Consumed (p/m)	9.6W*
Max Lumen Output (p/m)	1220lm
Efficacy	Up to 127lm/W
Input Voltage	24V DC
Colour Temperature	6000K (W)
LED Chip & Qty	SMD2835 128/m
Beam Angle	150°
Dimmable	Yes (with correct power supply and controller)
Min Cut	62.5mm
Maximum Run Length	5m
IP Rating	IP65
Dimensions	L 20m x W 12mm x H 12mm
Operating Temperature	-40°C to +70°C
Average Life	40,000 hrs**
Warranty	7 years
Kit Includes	1 x 20m LED strip, 8x end-cap with hole, 8x end-cap without hole, 40x mounting clips, 4 x input cables with 100cm bare wire

24V LED Strip Lighting | Outdoor Single Colour



Weather Protected Standard LED Strip

ML-VLWP-4.8-W5 White 5m	ML-VLWP-4.8-W10 White 10m
ML-VLWP-4.8-NW5 Neutral White 5m	ML-VLWP-4.8-NW10 Neutral White 10m
ML-VLWP-4.8-WW5 Warm White 5m	ML-VLWP-4.8-WW10 Warm White 10m
Total Power Consumed (p/m)	4.8W*
Max Lumen Output (p/m)	(WW) 350lm (NW) 360lm (W) 390lm
Efficacy	Up to 80lm/W
Input Voltage	24V DC
Colour Temperature	3000K (WW) 4000K (NW) 6000K (W)
LED Chip & Qty	SMD3528 60/m
Beam Angle	120°
Dimmable	Yes (with correct power supply and controller)
Min Cut	100mm
Maximum Run Length	10m
IP Rating	IP65
Dimensions	L 5m x W 11mm x H 4mm / L 10m x W 11mm x H 4mm
Operating Temperature	-40°C to +70°C
Average Life	40,000 hrs**
Warranty	7 years
Kit Includes	1 x 5m/10m LED strip, 20/40 x saddles, 4/8 x end-caps, 1/2 x connector with cable, 1/2 x end connector seal

Weather Protected High Output LED Strip

ML-VLWP-9.6-W5 White 5m	ML-VLWP-9.6-W10 White 10m
ML-VLWP-9.6-NW5 Neutral White 5m	ML-VLWP-9.6-NW10 Neutral White 10m
ML-VLWP-9.6-WW5 Warm White 5m	ML-VLWP-9.6-WW10 Warm White 10m
Total Power Consumed (p/m)	9.6W*
Max Lumen Output (p/m)	(WW) 680lm (NW) 690lm (W) 780lm
Efficacy	Up to 80lm/W
Input Voltage	24V DC
Colour Temperature	3000K (WW) 4000K (NW) 6000K (W)
LED Chip & Qty	SMD3528 120/m
Dimmable	Yes (with correct power supply and controller)
Approx Min Cut	50mm
Maximum Run Length	10m
IP Rating	IP65
Dimensions	L 5m x W 11mm x H 4mm / L 10m x W 11mm x H 4mm
Operating Temperature	-40°C to +70°C
Average Life	40,000 hrs**
Warranty	7 years
Kit Includes	1 x 5m/10m LED strip, 20/40 x saddles, 4/8 x end-caps, 1/2 x connector with cable, 1/2 x end connector seal



Weather Protected Ultra Bright LED Strip

ML-VLWP-11.5-W5 White 5m	ML-VLWP-11.5-W10 White 10m
ML-VLWP-11.5-NW5 Neutral White 5m	ML-VLWP-11.5-NW10 Neutral White 10m
ML-VLWP-11.5-WW5 Warm White 5m	ML-VLWP-11.5-WW10 Warm White 10m
Total Power Consumed (p/m)	11.5W*
Max Lumen Output (p/m)	(WW) 1470lm (NW) 1590lm (W) 1610m
Efficacy	Up to 140lm/W
Input Voltage	24V DC
Colour Temperature	3000K (WW) 4000K (NW) 6500K (W)
LED Chip & Qty	SMD3014 128/m
Beam Angle	120°
Dimmable	Yes (with correct power supply and controller)
Approx Min Cut	62.4mm
Maximum Run Length	10m
IP Rating	IP65
Dimensions	L 5m x W 12.5mm x H 4mm / L 10m x W 12.5mm x H 4mm
Operating Temperature	-40°C to +70°C
Average Life	40,000 hrs**
Warranty	7 years
Kit Includes	1 x 5m/10m LED strip, 20/40 x saddles, 4/8 x end-caps, 1/2 x connector with cable, 1/2 x end connector seal



24V LED Strip Lighting | Outdoor RGB



Weather Protected Standard RGB LED Strip

ML-VLWP-7.2-RGB5 Colour Changing 5m
ML-VLWP-7.2-RGB10 Colour Changing 10m

Total Power Consumed (p/m)	7.2W*
Input Voltage	24V DC
Colour Temperature	RGB
LED Chip & Qty	SMD5050 30/m
Beam Angle	120°
Dimmable	Yes (with correct power supply and controller)
Approx Min Cut	166.7mm
Maximum Run length	10m
IP Rating	IP65
Dimensions	L 5m x W 12.5mm x H 4mm / L 10m x W 12.5mm x H 4mm
Operating Temperature	-40°C to +70°C
Average Life	40,000 hrs**
Warranty	7 years
Kit Includes	1 x 5m/10m LED strip, 20/40 x saddles, 4/8 x end-caps, 1/2 x connector with cable, 1/2 x end connector seal

Weather Protected High Output RGB LED Strip

ML-VLWP-14.4-RGB5 Colour Changing 5m

Total Power Consumed (p/m)	14.4W*
Input Voltage	24V DC
Colour Temperature	RGB
LED Chip & Qty	SMD5050 60/m
Beam Angle	120°
Dimmable	Yes (with correct power supply and controller)
Approx Min Cut	100mm
Maximum Run length	10m
IP Rating	IP65
Dimensions	L 5m x W 12.5mm x H 4mm
Operating Temperature	-40°C to +70°C
Average Life	40,000 hrs**
Warranty	7 years
Kit Includes	1 x 5m LED strip, 20 x saddles, 4 x end-caps, 1 x connector with cable, 1 x end connector seal



Neon LED Strip

ML-VLN-14.4-RGB20 Colour Changing 20m

Total Power Consumed (p/m)	14.4W*
Input Voltage	24V DC
Colour Temperature	RGB
LED Chip & Qty	SMD2835 120/m
Beam Angle	130°
Dimmable	Yes (with correct power supply and controller)
Approx Min Cut	50mm
Maximum Run Length	5m
IP Rating	IP65
Dimensions	L 20m x W 12mm x H 12mm
Operating Temperature	-40°C to +70°C
Average Life	40,000 hrs**
Warranty	7 years
Kit Includes	1 x 20m LED strip, 8x end-cap with hole, 8x end-cap without hole, 40x mounting clips, 4 x input cables with 100cm bare wire



LED Strip | Cables



RGB Colour

ML-RGBC30
ML-RGBC100

Rated Voltage	300V
Suitable Voltage	12-24V DC
Conductor Size	0.38mm ²
Colour Conductors	Red, green, blue & black
Flame Retardant Grade	VW-1
Rated Temperature	80°C
Length	30m, 100m



RGBW Colour

ML-RGBWC30
ML-RGBWC100

Rated Voltage	300V
Suitable Voltage	12-24V DC
Conductor Size	0.38mm ²
Colour Conductors	Green, black, red, white & blue
Flame Retardant Grade	VW-1
Rated Temperature	80°C
Length	30m, 100m

LED Strip | Accessories

Strip to Strip Connectors (5pk)

All suitable for indoor or outdoor flexible strips

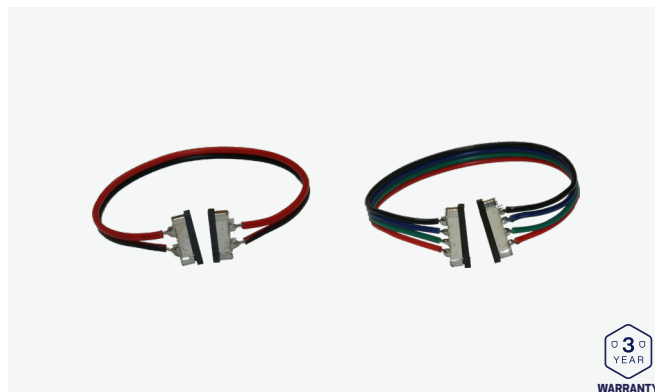


ML-SSS-X1 Single colour strip connector suits 8mm wide flexible strips
ML-SSS-X1-10 Single colour strip connector suits 10mm wide flexible strips
ML-RGB-SS-X1 RGB strip connector suits 10mm wide flexible strips
ML-RGBW-SS-X1 RGB strip connector suits 12mm wide flexible strips

Strip-Strip Flex Connectors (5pk)

✓ Order In Only

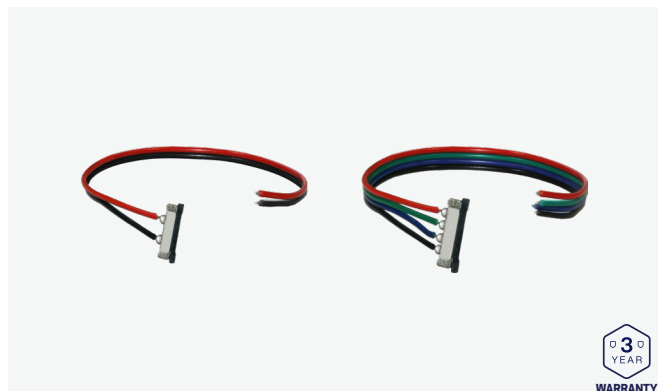
All suitable for indoor or outdoor flexible strips



ML-CURVE-X1 Single colour strip connector suits 8mm wide flexible strips
ML-RGB-CURVE-X1 RGB strip connector suits 10mm wide flexible strips

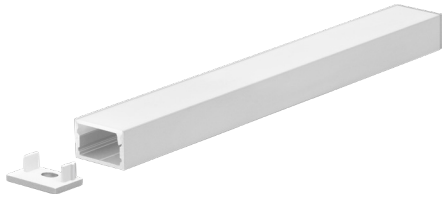
Strip to Strip Power Connectors (5pk)

All suitable for indoor or outdoor flexible strips



ML-SSP-X1 Single colour strip-power connector suits 8mm wide flexible strips
ML-RGB-SP-X1 RGB strip connector suits 10mm wide flexible strips
ML-RGBW-SP-X1 RGBW strip connector suits 12mm wide flexible strips

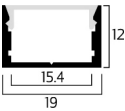
Aluminium Housing



Universal Aluminium Profile (2m)

ML-ALU2-K-V3 Aluminium Profile Kit (2m length)

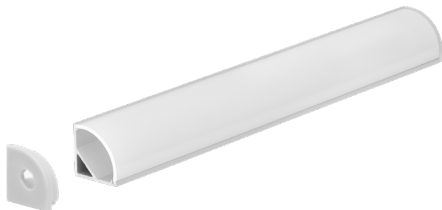
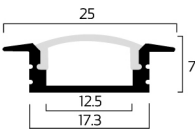
Size	L 2m x W 19mm x H 12mm
2m Kit Includes	1 x 2m Aluminium housing 1 x 2m Opaque diffuser (ML-ALU2-DIFF-V3) 2 x End-caps (ML-ALU2/4-EC-V3)
Minimum Order	2 Kits (minimum due to safe packing methods)
Optional	2m Clear diffuser (ML-ALU2-DIFFC-V3)



Recessed Aluminium Profile (2m)

ML-ALUR-K-V3 Aluminium Profile Kit

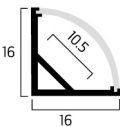
Size	L 2m x W 25mm x H 7mm
Cut Out Width	17.3mm
Kit Includes	1 x 2m Aluminium housing, 1 x 2m Opaque diffuser (ML-ALUR-DIFF-V3), 2 x End-caps (ML-ALUR-EC-V3), 4 x Mounting brackets (ML-ALUR-MB-V3)
Minimum Order	2 Kits (minimum due to safe packing methods)



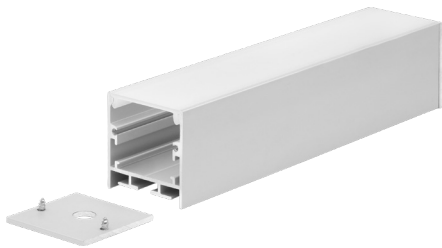
Corner Aluminium Profile (2m)

ML-ALUCR-K-V3 Aluminium Profile Kit

Size	L 2m x W 16mm x H 16mm
Kit Includes	1 x 2m Aluminium housing 1 x 2m Opaque diffuser 2 x End-caps (ML-ALUCR-EC-V3) 3 x Mounting brackets (ML-ALUCR-MB-V3)
Minimum Order	2 Kits (minimum due to safe packing methods)



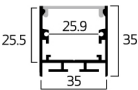
Aluminium Housing



Suspended Aluminium Profile (4m)

ML-ALUSUS-K-V3 Aluminium Profile Kit

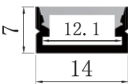
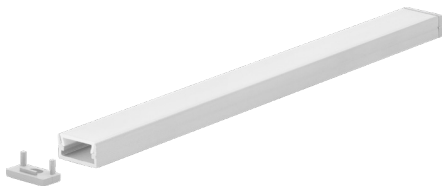
Size	L 4m x W 35mm x H 35mm
Kit Includes	1x 4m Aluminium housing 1x 4m Opaque diffuser (ML-ALUSUS-DIFF-V3) 8x End-caps (4 x with holes, 4 x without holes) 4 x Suspension kits 4 x Roof fixing points, 4 x Profile fixing points, 4 x 1200mm suspension wire 2 x Screws
Individual Suspension Kit	1 Kit
Minimum Order	Spring bracket (ML-ALU-SUS-SB)
Optional	Joining bracket (ML-ALU-SUS-JN)



Click-in Aluminium Profile (2m)

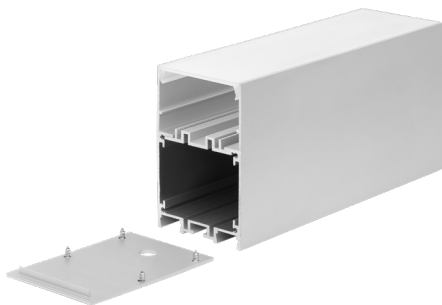
ML-ALU-1407-2M Aluminium Profile Kit

Size	L 2m x W 14mm x H 7mm
Kit Includes	1 x 2m Aluminium profile 1 x 2m opaque diffuser 4 x End caps - 2 x with hole, 2 x without hole (ML-ALU-1407-EC) 4 x mounting brackets (ML-ALU-1407-MB)
Minimum Order	2 Kits (minimum due to safe packing methods)



The 1407 is perfect for low profile, rectangular cutouts or slim surface mounted installation requirements and comes with clips allowing pre-wired strips already installed in the profile to take place, saving labour time.

Aluminium Housing



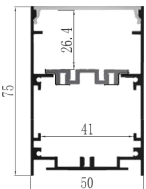
Surface Aluminium Profile (4m)



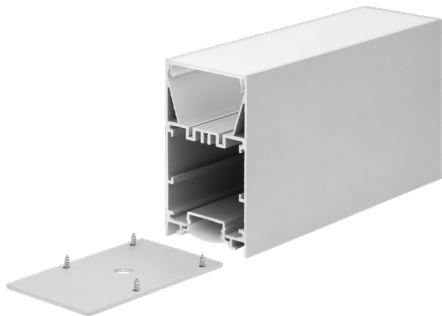
DRIVER FITS INSIDE

ML-ALU-5075-4M Aluminium Profile Kit

Size	L 4m x W 50mm x H 75mm
Kit Includes	1 x 4m Aluminium profile 1 x 4m Opaque diffuser 4 x End caps, 2 x with hole, 2 x without hole (ML-ALU-5075-EC) 4 x Mounting brackets (ML-ALU-5075-MB)
Minimum Order	1 Kit
Optional	Suspension kit (ML-ALUSUS-KIT-V3)



The 5075 is the perfect profile for long lengths of custom LED strips installed with ease. With a removable tray the profile allows for LED strips to be installed on the tray with space for cable or direct fixing to occur directly behind it and when ready for the tray to simply be clipped into place.



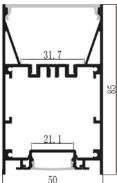
Dual Illumination Aluminium Housing (4m)



DRIVER FITS INSIDE

ML-ALU-5085-4M Aluminium Profile Kit

Size	L 4m x W 50mm x H 85mm
Kit Includes	1 x 4m Aluminium profile 1 x 4m Opaque diffuser 4 x End caps, 2 x with hole, 2 x without hole (ML-ALU-5085-EC) 4 x Mounting brackets (ML-ALU-5085-MB)
Minimum Order	1 Kit
Optional	Suspension kit (ML-ALUSUS-KIT-V3)



The 5085 profile has both direct and indirect illumination outlets for top and bottom cover. With a large diffuser on toward the ground the internal space (31.7mm) allows for multiple LED strips to be installed and the top allows for another LED strip to wash the ceilings creating incredible illumination with ease.



LED Controllers



RF Wall Controller

ML-2836-DIM-US

Functions
Operating Voltage
Operating Frequency
IP Rating
Dimensions
Required Receiver

On/Off switch and 0-100% dimmer
3V (CR2032 not included)
434MHz RF
IP20
L 75mm x H 120mm x D 41mm
ML-VLC-C5

This simple '1-wheel' dimmer controller is completely wireless and battery operated allowing it to be installed with ease. The 1-wheel configuration allows full dimming control (256 levels) and on/off capability. The controller has a power saving mode which allows the replaceable battery to last up to 2 years.



RGB Wall Touch Panel Controller

ML-2820-US3

Colour Control
Functions

Input Voltage
Operating Frequency
IP Rating
Dimensions
Required Receiver

RGB + white
3 zone controller (separately or synchronised), RGBW colour change speed, 10 changing modes, dimming and speed control
240V AC
434MHz RF
IP20
L 75mm x H 120mm x D 30.5mm
ML-VLC-C5

The ML-2820-US3 glass wall controller from M-Elec allows easier connections without the need for complicated wiring or connections. With a simple interface, the ML-2820-US3 allows the user to have 3 separate zones which can be operated separately or can be synchronised. With 10 pre-set colour sequences and full RGB/W control, the ML-2820-US3 is both easy to wire and operate.

LED Controllers



Single Colour Remote Controller

ML-2819SDIM

Colour Control Functions
Operating Voltage
Operating Frequency
IP Rating
Dimensions
Required Receiver

Single colour
Control 4 zones (separately or synchronised), 3 different scenes & dimming control
4.5VDC battery (not included)
434MHz
IP20
L 55mm x H 120mm x D 17mm
ML-VLC-C5

The single colour controller offers smooth and consistent remote dimming via RF (Radio Frequency) to control any LED product connected to the receiver (purchased separately). The ML-2819SDIM also features 4 zone control and 3 memory functions that can memorise your favourite settings.



RGBW Remote Controller

ML-2819S

Colour Control Functions
Operating Voltage
Operating Frequency
IP Rating
Dimensions
Required Receiver

RGB
RGB colour change control, 4 zones (separate or synchronised), 3 different scenes & dimming control
4.5VDC battery (3x AAA not included)
434MHz
IP20
L 55mm x H 120mm x D 21mm
ML-VLC-C5

The RGB wireless controller is the 'all round' pick of remotes for RGB LED strips. Working with the ML-VLC-C5 this remote can control colours, 4 zones and a white output. With 10 preset colour changing modes this remote is very universal in its applications.



RGBW Remote Controller

ML-2819T8

Colour Control Functions
Operating Voltage
IP Rating
Dimensions
Required Receiver

RGB + white
RGB colour change, white control, 8 zones, speed & brightness control
3VDC battery (2 x AAA not included)
IP20
L 44mm x H 131mm x D 24mm
ML-VLC-C5

This RGBW wireless remote offers up to 8 zones of RGBW all-in-one remote. Working wirelessly with the ML-VLC-C5 receiver this remote has full control of all colours individually and allows both speed and brightness control of the various modes. Supplied with storage cradle.

LED Controllers



1-10V Signal Dimmer

ML-DIM-S

M-Elec's plate-mounted 1-10V signal dimmer allows the user to blend the 1-10V controller with traditional dimmers and switch plates seamlessly. Integrating into conventional standard style switch plates and working with one or multiple 1-10V controllers, the ML-DIM-S will dim LED strips and modules perfectly.

*Dimmer only, plate not included

* This is not a 240VAC Dimmer, it's a control dimmer

*IP20

0-10V 4 Channel Dimmer

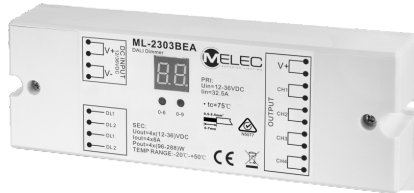
ML-2002



Input Voltage	12-36VDC
Input Control	0-10V signal
Input Channels	4
Output Power	4 x (60-180)W
Output Channels	4
IP Rating	IP20
Dimensions	L 166mm x H 23mm x D 53.4mm

The 0-10V 4 channel dimmer allows full control of strips and other constant voltage products. 0-10V gives superior dimming control with 256 levels on each channel. Capable of working with 1-10V dimmer controllers (ML-DIM-S) and other 0-10V inputs such as Dynalite and C-Bus systems (see manufacturer for details).

LED Controllers

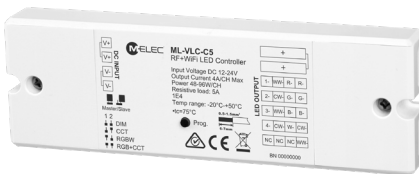


4 Channel DALI Dimmer

ML-2303BEA

Colour Control	RGB, RGB + white or Hybrid strips
Input Voltage	12-36VDC
Input Control	DALI
Input Channels	4
Output Power	4 x (96-288)W
Suitable Strip	RGB, CCT & RGBW
Output Current	1-4A x 4 channels
IP Rating	IP20
Dimensions	L 169mm x H 59mm x D 28.6mm

The new 4 channel DALI dimmer unit allows easy DALI address programming either manually or automatically offering RGB, RGB + white or Hybrid strip colour control from the one unit. Digital indicator for address display, with 4 channel capability the DALI addresses can be set from 1 to 4, matching all DALI systems in the marketplace.



5 Channel Controller

ML-VLC-C5

Colour Control	CCT, RGBW, RGB+CCT, DIMMING
Input Voltage	12-24VDC
Output Current	5 x 4A
Input Channels	5
Output Power	5 x 48-96W
Output Type	12-24V constant voltage output
Operating Temperature	-20°C to +50°C
IP Rating	IP20
Dimensions	L 145mm x H 46.5mm x D 16mm
Warranty	7 years

The C5 controller offers remote (RF) or Wi-Fi (Tuya App) control and is able to handle RGB, RGB+W, RGB+W+WW, CCT, or single channel dimming.

24V Power Supplies | Non Dimmable



30W Constant Voltage Non Dimmable



ML-VLPS-C30

Power (Max)	30W
Input Voltage	100-240V
Output Voltage	24V DC*
Outputs	1
IP Rating	IP20
Warranty	7 years
Size	L 260mm x W 30mm x H 18.5mm



60W Constant Voltage Non Dimmable



ML-VLPS-C60

Power (Max)	60W
Input Voltage	100-240V
Output Voltage	24V DC*
Outputs	1
IP Rating	IP20
Warranty	7 years
Size	L 300mm x W 30mm x H 18.5mm



100W Constant Voltage Non Dimmable



ML-VLPS-C100

Power (Max)	100W
Input Voltage	100-240V
Output Voltage	24V DC*
Outputs	1
IP Rating	IP20
Warranty	7 years
Size	L 330mm x W 30mm x H 22mm



150W Constant Voltage Non Dimmable



ML-VLPS-C150

Power (Max)	150W
Input Voltage	100-240V
Output Voltage	24V DC*
Outputs	1
IP Rating	IP20
Warranty	7 years
Size	L 368mm x W 30mm x H 22.5mm

24V Power Supplies | Non Dimmable



200W Constant Voltage Non Dimmable

ML-VLPS-C200

Power (Max)	200W
Input Voltage	100-240V
Output Voltage	24V DC*
Outputs	2
IP Rating	IP66
Warranty	7 years
Size	L 256mm x W 78mm x H 47mm



300W Constant Voltage Non Dimmable

ML-VLPS-C300

Power (Max)	300W
Input Voltage	100-240V
Output Voltage	24V DC*
Outputs	2
IP Rating	IP66
Warranty	7 years
Size	L 276mm x W 78mm x H 47mm



360W Constant Voltage Non Dimmable

ML-VLPS-C360

Power (Max)	360W
Input Voltage	170-265V
Output Voltage	24V DC*
Outputs	2
IP Rating	IP66
Warranty	7 years
Size	L 276mm x W 78mm x H 47mm

24V Power Supplies | Dimmable



30W Constant Voltage Dimmable



ML-VLPS-D30

Power (Max)	30W
Dimmable	Yes (Triac, 0/1-10V, Potentiometer, 10V PWM)
Input Voltage	200-240V AC
Output Voltage	24V DC*
Outputs	1
IP Rating	IP66
Warranty	7 years
Size	L 260mm x W 32mm x H 20mm



60W Constant Voltage Dimmable



ML-VLPS-D60

Power (Max)	60W
Dimmable	Yes (Triac, 0/1-10V, Potentiometer, 10V PWM)
Input Voltage	200-240V AC
Output Voltage	24V DC*
Outputs	1
IP Rating	IP66
Warranty	7 years
Size	L 300mm x W 32mm x H 20mm



100W Constant Voltage Dimmable



ML-VLPS-D100

Power (Max)	100W
Dimmable	Yes (Triac, 0/1-10V, Potentiometer, 10V PWM)
Input Voltage	200-240V AC
Output Voltage	24V DC*
Outputs	1
IP Rating	IP66
Warranty	7 years
Size	L 330mm x W 32mm x H 20mm



150W Constant Voltage Dimmable



ML-VLPS-D150

Power (Max)	150W
Dimmable	Yes (Triac, 0/1-10V, Potentiometer, 10V PWM)
Input Voltage	200-240V AC
Output Voltage	24V DC*
Outputs	1
IP Rating	IP66
Warranty	7 years
Size	L 368mm x W 32mm x H 23mm

*Only suitable for use with 24V LED Strip

24V Power Supplies | Dimmable



200W Constant Voltage Dimmable

ML-VLPS-D200

Power (Max)	200W
Dimmable	Yes (Triac, 0/1-10V, Potentiometer, 10V PWM)
Input Voltage	200-240V AC
Output Voltage	24V DC*
Outputs	1
IP Rating	IP66
Warranty	7 years
Size	L 256mm x W 78mm x H 47mm

300W Constant Voltage Dimmable

ML-VLPS-D300

Power (Max)	300W
Dimmable	Yes (Triac, 0/1-10V, Potentiometer, 10V PWM)
Input Voltage	200-240V AC
Output Voltage	24V DC*
Outputs	1
IP Rating	IP66
Warranty	7 years
Size	L 276mm x W 78mm x H 47mm



360W Constant Voltage Dimmable

✓ Order In Only

ML-VLPS-D360

Power (Max)	360W
Dimmable	Yes (Triac, 0/1-10V, Potentiometer, 10V PWM)
Input Voltage	200-240V AC
Output Voltage	24V DC*
Outputs	1
IP Rating	IP66
Warranty	7 years
Size	L 276mm x W 78mm x H 47mm



12V Power Supplies | Non Dimmable



200W Constant Voltage Non Dimmable

ML-PSWP200-X2

Power (Max)	200W
Input Voltage	240V
Output Voltage	12V DC*
Outputs	2
IP Rating	IP66
Warranty	3 years
Size	L 256mm x W 78mm x H 47mm

300W Constant Voltage Non Dimmable

ML-PSWP300-X2



Power (Max)	300W
Input Voltage	240V
Output Voltage	12V DC*
Outputs	2
IP Rating	IP66
Warranty	3 years
Size	L 276mm x W 78mm x H 47mm

*Only suitable for use with 12V LED Strip

12V Power Supplies | Dimmable



60W Constant Voltage Dimmable



ML-PSD60-X2

Power (Max)	60W
Dimmable	Yes (Triac, 0/1-10V, Potentiometer, 10V PWM)
Input Voltage	200-240V AC
Output Voltage	12V DC*
Outputs	1
IP Rating	IP66
Warranty	3 years
Size	L 300mm x W 32mm x H 20mm



100W Constant Voltage Dimmable



ML-PSD100-X2

Power (Max)	100W
Dimmable	Yes (Triac, 0/1-10V, Potentiometer, 10V PWM)
Input Voltage	200-240V AC
Output Voltage	12V DC*
Outputs	1
IP Rating	IP66
Warranty	3 years
Size	L 330mm x W 32mm x H 20mm



150W Constant Voltage Dimmable



ML-PSD150-X2

Power (Max)	150W
Dimmable	Yes (Triac, 0/1-10V, Potentiometer, 10V PWM)
Input Voltage	200-240V AC
Output Voltage	12V DC*
Outputs	1
IP Rating	IP66
Warranty	3 years
Size	L 368mm x W 32mm x H 23mm



At **M-Elec** our goal is to not to just supply electricians with the best products but the best services as well.
Be part of the electrical community today.

Sign up to have access to:



Free 3 Year OSW



Tech Support



Exclusive Promos



Reviews & Tests



On the Tools Tips

Register for free now
sparkysunited.com.au/warranty





LED STRIP CALCULATORS

Easy to use online tools that can help make purchasing LED strip lighting simple!



Online Tools
Scan now



LED STRIP & ALU CUTTING SERVICE

We'll cut - We'll solder - We'll deliver



Cutting Service
Scan now